

The Carlos Museum Bookshop: Art Jigsaw, Notecards & Other Gifts

HOW TO ORDER

Please email your request and/or general questions with your shipping address and phone number to Bookshop Manager Mark Burell at mburell@emory.edu, and you will receive a call to process your order.

Most orders for books in stock will be shipped within five business days. If a book is temporarily sold out, it may take longer to fulfill orders due to current shipping delays, but orders will be processed as quickly as possible.

Free curbside pickup options are now available weekdays by appointment. If you are unable to come by for pickup, we can sometimes deliver for free to local addresses within a four mile radius of the museum.

Click [HERE](#) for lists of great books about books, books for coping with crisis, books of world folktales and mythology, and books for adults.

You can also support the museum with the purchase of Bookshop **gift cards**, which can be redeemed for mail order purchases.

Remember, all purchases support the Carlos Museum, so stock up today!

NEW ONLINE SHOPPING SITE

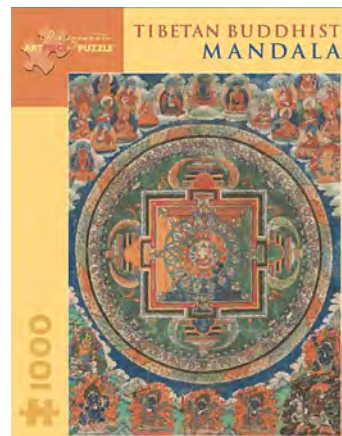
Even more books are available on our new Carlos Museum Bookshop site at Bookshop.org. Your purchases on this non-profit site benefit the Museum and many other small independent bookstores across the country. [CLICK HERE TO SHOP](#)

Ashmolean Museum: Embroidered Hanging with Peacock Jigsaw



The peacock was emblematic not of glory but of compassion and care, and so it would appear to be in this intricate hanging. What we might expect to be its show-stealing splendor is almost upstaged by the pure-white peonies, lilies, and roses all around. The eyes of its furred-up tail, though beautiful, blend into the background as though they were another flower. Intended for adults and children over 13 years. Late 19th or early 20th century. A puzzle of 1,000 pieces. \$19.99.

Tibetan Buddhist Mandala Jigsaw



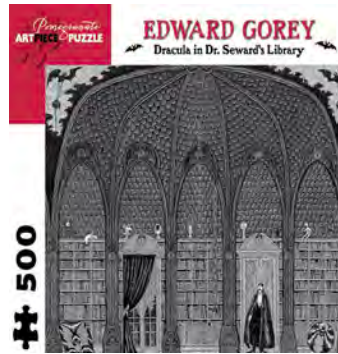
Devotional paintings like this one helped to spread Buddhism from India into Tibet, China, and beyond. Initially, traveling storytellers used the paintings on cloth (thangka) as visual aids while they related their tales. In time, such paintings took on a strictly devotional character and became teaching tools used by Buddhist monks. Thangka are not manifestations of an individual's creativity; they are executed according to strict standards devised to ensure that the images of the deities convey the desired spiritual effect. This gloriously rich and colorful, dizzyingly complex puzzle presents a mandala of Sitatapatra Aparajita, an invincible, parasol-wielding goddess who destroys evil spirits. From the Asian Art Museum, San Francisco. A puzzle of 1,000 pieces. \$19.95.

**Vincent Van Gogh:
Almond Blossom
Jigsaw**



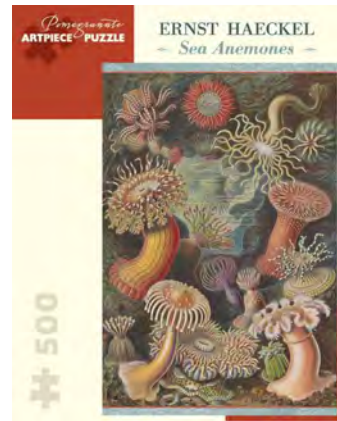
Demonstrating influence from Impressionism and Japanese prints, *Almond Blossom* was painted in response to the birth of van Gogh's nephew. Motivated by the occasion and moved by his brother Theo naming the child after him, Van Gogh painted *Almond Blossom* as a gift in celebration of the event. He had previously been greatly inspired by flowering trees, and appreciated their power as symbols of rebirth. A puzzle of 1,000 pieces. \$19.99

**Edward Gorey:
Dracula in Dr. Seward's Library
Jigsaw**



Author and illustrator Edward Gorey was also a set and costume designer for theater productions from Cape Cod to Broadway, including a staging of Bram Stoker's *Dracula*, for which he was awarded a Tony. One of Gorey's stage designs for the play is reproduced for this challenging puzzle, giving you the opportunity to study his exquisite cross-hatched drawing technique up close. Intended for adults and children over 13 years. A puzzle of 500 pieces. \$17.95.

**Ernst Haeckel:
Sea Anemones
Jigsaw**



In the hopes of widening the public's understanding of naturalism, German biologist Ernst Haeckel published *Kunstformen der Natur* (or *Art Forms in Nature*) in 1904. The work, equal parts scientific text and artistic endeavor, highlights Haeckel's particular interest in the symmetries in living forms. This illustration is from a copy in the Case Book Collection in the Prints and Photographs Division of the Library of Congress. A puzzle of 500 pieces. \$17.95.

**Bodleian Library: High
Jinks Bookshelves
Jigsaw**



Late 19th- and early 20th-century children's books are the subjects of this print from the Bodleian Libraries. Richly illustrated covers in bright reds, blues and greens adorn the rows of shelves, featuring titles such as *Little Miss Sunshine*, *No Ordinary Girl* and *A Girl of High Adventure*. They are all light-hearted tales with brave female characters that can be found within the Bodleian Library, which is one of the oldest libraries in Europe. A puzzle of 500 pieces. \$19.99.

Vintage Library Foil Stamped Jigsaw



This bibliophile's jigsaw is a vibrant photo of old book spines with pieces that are stamped with shiny gold foil accents. This puzzle is packaged in stylish, matte-finish sturdy box, also with gold foil accents, perfect for gifting, reuse, and storage. A dazzling and challenging puzzle of 1,000 pieces. \$17.99.

Vintage Pencils Foil Stamped Jigsaw



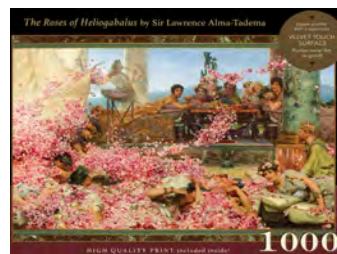
This puzzle features a vibrant photo of vintage pencils collected from around the US. This unique puzzle dazzles with pieces that are stamped with shimmering gold foil accents. A dazzling and challenging puzzle of 1,000 pieces. \$17.99.

Hieronymus Bosch: Garden of Earthly Delights Jigsaw



The surreal imagery in Hieronymus Bosch's masterpiece continues to fascinate viewers 500 years after its creation. Full of naked figures, fantastical creatures, and giant strawberries, the triptych depicts the Garden of Eden, Earth, and Hell. This puzzle features the center panel: the temptations on Earth, particularly the sin of lust (and thus is suggested for adults and children over 13). A puzzle of 1,000 pieces. \$19.99.

The Roses of Heliogabalus: Velvet-Touch Jigsaw



This is a Velvet-Touch puzzle featuring the art of Sir Lawrence Alma-Tadema (1836-1912), a Dutch painter involved in the Romantic and Neoclassical movements. His depiction of luxury and decadence during the Roman Empire made him the most famous and highly paid artist in the Victorian Era. This richly colored puzzle features pieces with a soft, velvety feel, and no distracting puzzle glare. Also includes three bonus features: a sturdy, Velvet-Touch print suitable for framing, a handy box-top stand, and a re-closable bag to prevent lost pieces. A puzzle of 1,000 pieces. \$28.95.

Mosaic Mind Bender Puzzle: An Ancient Roman Mosaic Jigsaw



Produced with the Getty Museum, this beautiful puzzle features three different mosaics: the centerpiece is from Herculaneum, the corners are from a Gallo-Roman stone and glass floor mosaic, and the side bars come from a third Roman design. A puzzle of 500 pieces. \$16.99.

Marianne North: Honeyflowers and Honeysuckers Jigsaw



Kew Gardens has a gallery dedicated to the paintings of the remarkable Victorian artist Marianne North, who had a great eye for botanical detail. She painted her way through Africa, the Seychelles, and Chile. North's journey to South Africa, where she painted this picture in 1882, was among her last. A puzzle of 1,000 pieces. \$19.99.

Gustav Klimt: Adele Bloch Bauer Jigsaw



This portrait of Adele Bloch-Bauer I is part of the artist's groundbreaking Golden Phase. Inspired by Byzantine mosaics, the original painting is layered with gold and silver leaf, and embellished with a textured gesso relief of elaborate geometric patterns. Klimt's work was crucial in the evolution of art from the 19th century to the 20th, and his influence on illustration was momentous. A puzzle of 1,000 pieces. \$19.99.

The Keepsake Puzzle



This Velvet-Touch jigsaw puzzle features the art of Kate Elizabeth Bunce (1856-1927), an English painter and poet associated with the Arts and Crafts movement. Bunce studied at the Birmingham School of Art in the 1880s and exhibited across the UK. A devout Christian, she painted a series of decorative pieces in churches, often in conjunction with her sister, a metalworker and watercolorist. The painting is based on a poem by Dante Gabriel Rossetti. Donations from the sale of this puzzle will go to American Women Artists (AWA). AWA has worked diligently to bring women artists to the forefront of the art world, greatly increasing professional opportunities in the visual fine arts and leading to greater inclusion in the field. A puzzle of 1,000 pieces. \$28.95.

Aoki Toshio: Shoki and Demons Puzzle



Aoki Toshio (1854-1912) worked as a newspaper cartoonist and achieved success as a portraitist. He was probably best known for the murals he hand-painted in the homes of prominent Americans nationwide. The deity Shoki has Chinese origins and often appears in Japanese sculpture and painting of the Edo period (1615-1868). Legends vary but a common theme is that Shoki protects people from demons and evil. A beautifully detailed puzzle of 1,000 pieces. Now out of print, last copy! \$19.99.

Mancala, the African Stone Game



The captivating African Stone game, also known as Mancala is an ancient game that was played by scooping out pits and calas in the sand and, in many instances, used diamonds as stones. Many historians believe that mancala is the oldest game in the world. This stunning set includes a solid wood board with walnut stain and colored glass stones. Measures 22" x 6". For 2 players. \$36.

Bob Ross Dynamic Mug



When this "self-painting" mug is cold, Bob Ross in a black void reminds you to be calm and find time in your life to create. When you pour in a hot beverage, a Bob Ross painting magically appears to inspire you. "Play. Have fun." These special mugs are not dishwasher safe but are microwave safe. 14 oz. \$12.95. boxed.

Senet, the Ancient Egyptian Board Game



Ancient senet games were found in King Tutankhamon's tomb; over the centuries, the senet game evolved into backgammon, another game of chance and strategy. Wooden board with pullout drawer for storing game pieces, including four wooden "dice" sticks as well as contemporary dice. Measures 16"x 5" x 2". \$38.

Haikubes



Perfect for individual inspiration or as an after-dinner game with friends or family, Using a set of 63 word cubes, simply roll the cubes and use the words that come up to create an expressive haiku. Includes two cubes with inspirational cues to help guide the haiku. \$24.95.

Classic Paperbacks Notecards



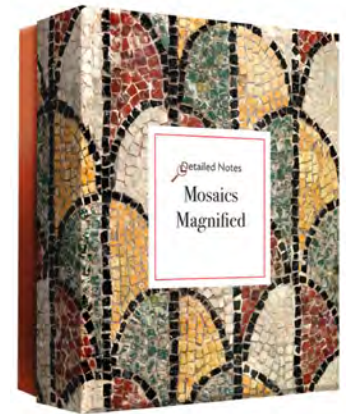
Every book lover's collection includes a few treasured favorites with frayed edges and covers soft from wear. Richard Baker's remarkable paintings of vintage paperback books capture these intimate details. He started painting dogeared copies of vintage paperbacks several years ago and prowled used bookstores in search of appropriately careworn paperbacks to immortalize in his gouache portraits: "No precious first editions, no rare things—just your common companions." The "book portraits" in this set feature titles by some of the most iconic writers of the modern era, from Emily Dickinson and Mark Twain to George Orwell and Susan Sontag. \$16.95, boxed notecards.

Ohara Shoson Keepsake Boxed Notecards



Ohara Shōson (1877–1945) specialized in Japanese woodblock prints, particularly kachō-e (bird-and-flower pictures). The four prints included in this set of keepsake boxed notecards, all from the collection of the Toledo Museum of Art, show how meticulously he rendered both animals and nature, adding embossed detail in lieu of inking a design when necessary. Sixteen assorted 4½" x 5½" blank notecards (four each of four designs) with envelopes in a decorative hinged box. \$15.95, boxed notecards.

Mosaics Magnified: A Detailed Notes Boxed Notecards



These small (5.5"x4") luxury notecards feature a striking close-up of a great artwork on the front, and the entire artwork on the back. This set of 16 notecards with four designs reproduces details of the Lion Hunt mosaic from Pella; the Alexander Mosaic and a mosaic column from Pompeii; and a mosaic floor from the Villa Romana del Casale, Piazza Armerina, Sicily. \$14.95, boxed notecards.

Paper Flowers Cards and Envelopes: The Art of Mary Delany



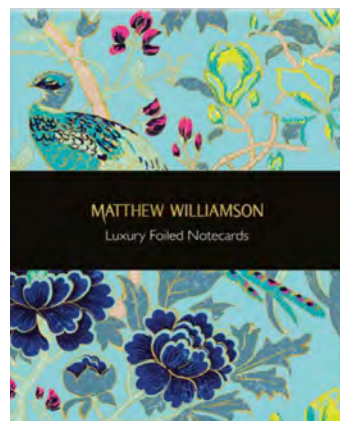
Carlos Museum best-seller! Each exquisite paper flower in this elegant collection blooms with extraordinary detail and color. Eighteenth-century British artist Mary Delany created each piece by cutting and layering tiny pieces of paper on black ink backgrounds. The fine shading and depth are as intricately detailed as a botanical illustration and scientifically accurate as well. Printed on thick, textured paper, the set features sunflowers, rhododendron, cornflower, water lilies, and more. Perfect for any occasion that warrants beauty and sophistication. \$16.95, box set.

Victoria & Albert Museum Chinese Tree Gold Foil Notecards



Carlos Museum best-seller! Eight cards each of two designs with envelopes. The box and each card are embellished with gold foil. \$15.95, box set.

Matthew Williamson Birds & Blossoms Gold Foil Notecards



Carlos Museum best-seller! Eight cards each of two designs with envelopes. The box and each card are embellished with gold foil. \$15.95, box set.

Akan Disc Earrings



The element in these earrings is reproduced from a traditional design currently worn by women in West Africa. Jewelry similar to this was originally produced in gold by the lost wax process. This type of gold disc has been a popular element in jewelry for 4000 years. 1.5" long, made with pewter with gold finish and blue glass beads. \$21.

Asian Jade Earrings



Throughout history in both China and Japan, jade (jadeite or nephrite) has been considered the most precious of all stones. The ancient Chinese associated green jade with wisdom and the ability to ensure long life. This pair is made with "old and new" jade. \$21.

A Brief History of Art Mug



The History of Art Mug spans the story of art from Pre-history to Post-Modern—from Lascaux to Picasso—in a few sips of coffee or tea. It contains 24 masterpieces with timeline on a curved surface. 12 oz. generous cup, dishwasher/ microwave safe. \$12.95

Artistic Cat Art Mug



This mug understands the temperamental artist: Mercurial. Elusive. Pounces, stirs things up. Featuring portraits by such artists as Bosch, Goya, Klee, Chagall, and many more, with a pawprint on the inside bottom 12 oz. generous cup, dishwasher/ microwave safe. \$12.95 boxed.

Golden Splendor Journal



This gorgeous journal is a reproduction of a 19th-century bookbinding, inscribed with a Persian love poem. The cover design is embellished with gold-foil tracery, and raised embossing calls attention to its intricate details. Includes a satin ribbon bookmark to keep your place. \$12.99, 160 lightly lined pages.

Inca Treasure Journal



This journal's cover reproduces a hand-tooled painting on leather by Peruvian artist Efrain Garces Paccori, featuring images from the Nazca geoglyphs in an Incan calendar wheel. \$12.99, 160 lined pages.

Elephant Festival Journal



This slightly larger-than-normal journal features an Eastern-inspired cover design in jewel-tone shades of gold, turquoise, ruby, emerald, and more. Includes a gold ribbon bookmark to keep your place. \$15.99, 192 lined pages.

Unicorn Tapestry Journal



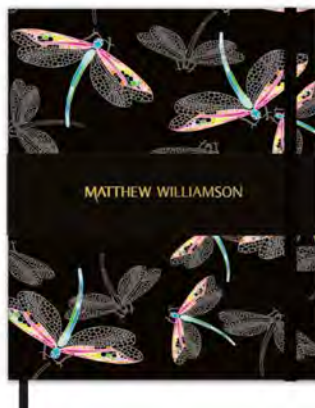
This beautiful journal features the world-famous Unicorn in Captivity tapestry from the collection of the Metropolitan Museum of Art, New York City. Gold foil, embossed, covered spine, gold gilded edges, ribbon bookmark. Includes a ribbon bookmark to keep your place. \$17.99, 192 lined pages.

Klimt Tree of Life Journal



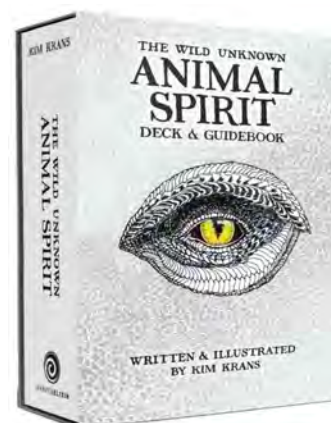
Carlos Museum best-seller! This small (7"x5") journal beautifully reproduces Gustav Klimt's painting of the Tree of Life. Gold foil accents and embossing produces a beautiful image. Journal includes inside back cover pocket. \$8.99, 160 lightly lined pages.

Matthew Williamson Dragonflies Journal



This gorgeously designed small (7"x5") journal features gold foil paper edging, an elastic band closure, bookmark ribbon, and striking gold accents. \$13.95, 220 lined pages.

The Wild Unknown Animal Spirit Deck and Guidebook



Hand drawn in bestselling author/artist Kim Krans's detailed and emotionally evocative style, this set is a work of art that explores the mysteries of the natural world and the animal kingdom. Krans's powerful animal archetypes offer insight into relationships, personalities, behaviors and tendencies and can be used alone or alongside her previous work, **The Wild Unknown Tarot** to add an additional layer of depth to readings. The hand-lettered, fully illustrated guidebook offers grounded, easy to understand explanations of the cards, a detailed look at the many spreads, practices, and concepts that power the Animal Spirit deck, and deep insight into how each animal helps illuminate our contradictions, our complex natures, and the endless mystery of who we are. Packaged in a striking hologram keepsake box. \$39.99.

Ganesha Magnetic Personality Puppet



Bring the positive energy of Ganesha into your life, or at least onto your finger or your fridge! 4" tall, \$6.95.

Plato Magnetic Personality Puppet



This petite Plato has the stature and dignified bearing of a finger puppet twice his size. Also a fridge magnet! 4" tall, \$6.95.

Cthulhu Magnetic Personality Puppet



H.P. Lovecraft's wonderful, horrible creation is now a puppet on your finger and a magnet on your fridge. Cthulhu that voodoo that you do so well. 4" tall, \$6.95.

Hathor Wall Plaque



Replica based on Egyptian New Kingdom original (ca. 1300 BC) features Hathor, goddess of music, dance, drinking, and love. She is sometimes represented embracing the deceased and so is also the goddess who revives the dead and welcomes them into the nether world. 18" x 9.5" and 11 pounds. \$98. Extra charges apply if shipping is required.

African Mask



Beautiful metal & wood Fang totem mask, handmade in Ghana. Measures 8" x 20" and weighs 3.5 pounds. \$78. Extra charges apply if shipping is required.

Egyptian Lapis and Turquoise necklace



A Carlos Museum Bookshop bestseller for 25 years! Ancient Egypt, one of the richest and most advanced of the early civilizations, appeared on the stage of history over 5,000 years ago. Hieroglyphic scripts and tomb decorations document the Egyptians' belief in the after-life, their mythology and deities. Jewelry was often worn as protective talismans. Gold was believed to reflect the life-giving rays of the sun, and the color and brilliance of gem stones traditionally determined their value and religious significance. 18" with lapis, carnelian, turquoise, pewter beads with gold finish. \$67.