

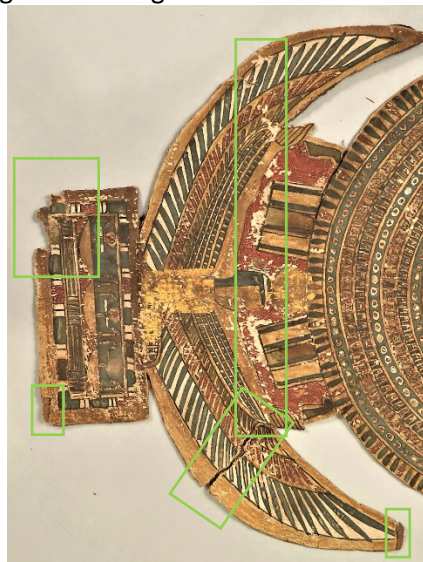
ArchaeaTechnica

Art Conservation Services

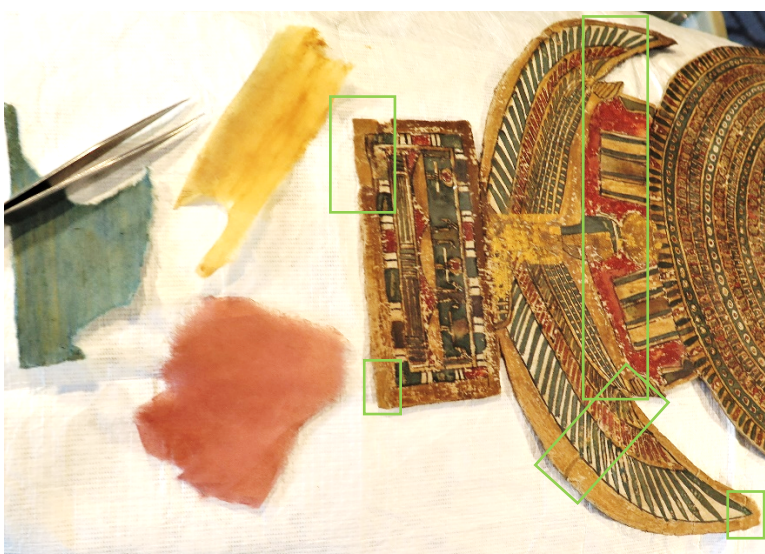


Carlos Museum Mummy Diary

Day 5 – Filling the losses on the cartonnage pectoral and abdominal panels to make them more solid were among the day's priorities since that would allow them to be humidified and fitted back on the mummy of Taosiris. We frequently use mending tissue colored with acrylic paints for this purpose. The tissue mends are very compatible with the cartonnage and they can be easily removed without damage to the surface, if needed. The image on the left below shows the areas mended on the pectoral in the green rectangles before treatment and the mended areas on the right with some of the tissues used.



Before treatment



After treatment with fills in place

Once the fills were set, it was possible to start to reshape the panels to fit on the mummy, as you can see in the images below, it was far from a close fit to start with.



The pectoral panel before humidification



the abdominal panel

Because these panels are so thin and they have a red paint that can be easily over-humidified and become sticky, it is important to go as slowly as possible. I created miniature humidity chambers over the panels- doing them one at a time, gradually adding gentle weight and tending them frequently.



Humidifying the abdominal panel

On Monday, I will post the update of how it worked. Have a good weekend!