

# ArchaeaTechnica

Art Conservation Services



## Carlos Museum Mummy Diary

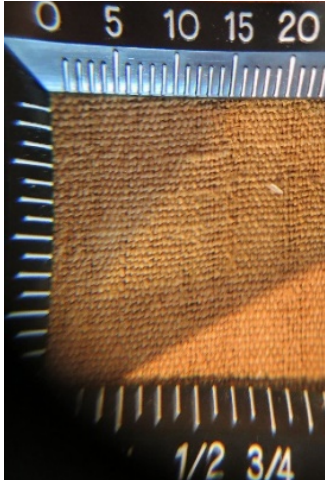
**Day 6** – We are beginning our second week working with the mummies. Time seems to be flying by! I hope some of you were able to watch our presentation yesterday. It was fun to be able to speak on camera about the project. If you missed it, you still have a chance- it has been posted to the Carlos Museum Mummy Cam page: <https://carlos.emory.edu/mummy-cam-june-2021>.

The first thing to do this morning was to check on the two cartonnage panels that were reshaped to fit back on the body- we were delighted at how well it had worked and that none of the paint became softened or smudged.

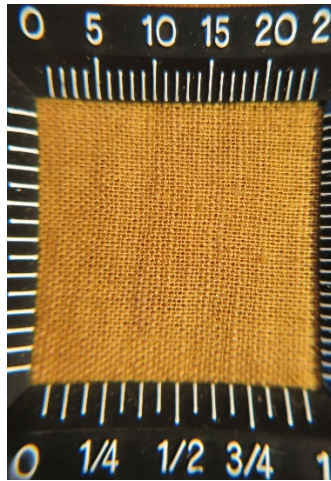


*The reshaped panels fitted to the mummy with a mockup linen band.*

The next step was making replacements for the linen bands that once secured the panels to the mummy so they can be securely reattached. I tried a mock-up (see above on the right) using a linen we had dyed for the Old Kingdom mummy project (you can see a video of that treatment on the Carlos Museum website <https://carlos.emory.edu/beneath-wrappings>). This modern linen is a similar weight to the ancient linen, although the color is slightly darker, but that will help make clear which parts are original and which are modern replacements. Sadly, no one now makes linen fabric as well as the ancient Egyptians did or with the same weaving technique that has more warp threads than weft, as you can see below- the modern one has a more open weave. Renée created all the new bands, folded them in three like the originals, and ironed them with this adorable tiny quilter's iron (see photo below).



*Ancient linen weave (warp vertical)*



*Modern linen (warp vertical)*



*Ironing the modern linen bands*

The next thing we needed to check was the mask - we removed the padding that was opening out the mask and discovered that it now fit on the wig stand so we can proceed to open it out with better support.



*The partly reshaped mask*

The mask was humidified on the wig stand for several hours, then taken off the wig stand and turned over to increase the pressure on the distorted sections and humidified for the rest of the day.



*Humidifying on the wig stand*



*reshaping upside down*

Look for the next mummy diary tomorrow (or watch us on the mummy cam) to see how successful that treatment was!